

(No Model.)

H. C. JOHNSON.

SLED BRAKE.

No. 392,341.

Patented Nov. 6, 1888.

Fig. 1.

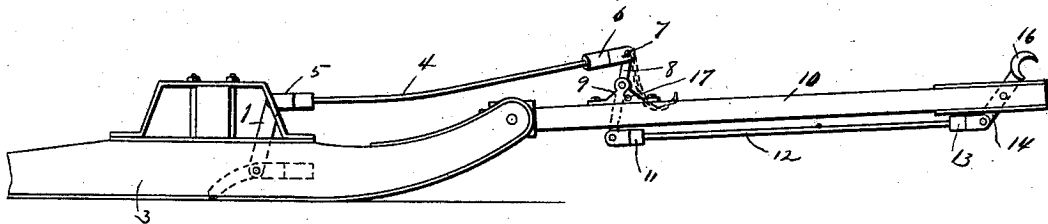


Fig. 2.

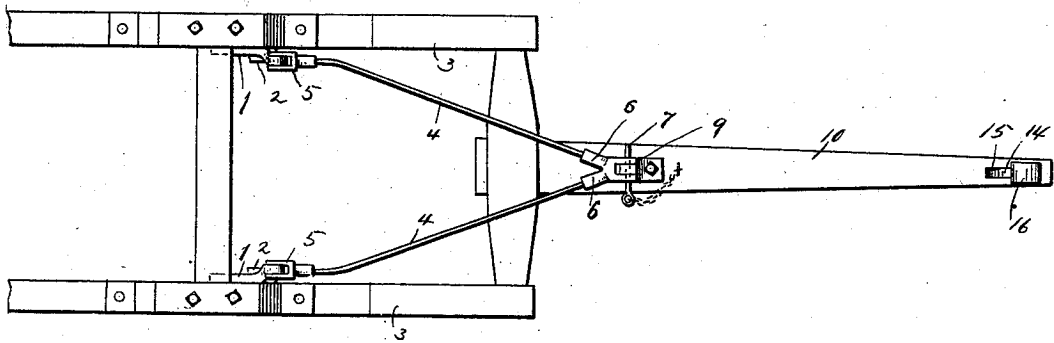
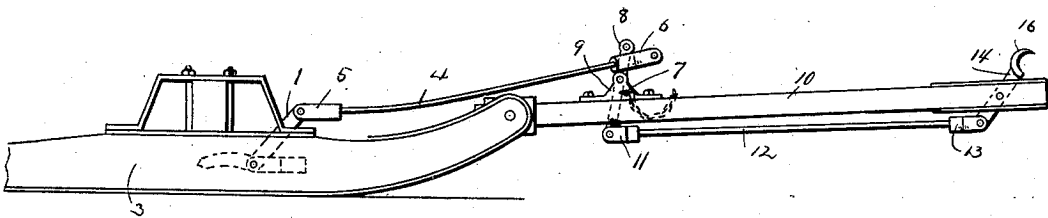


Fig. 3.



WITNESSES:

John H. Deemer
E. M. Clark

INVENTOR:

H. C. Johnson
BY *Munn & Co*
ATTORNEYS.

UNITED STATES PATENT OFFICE.

HANS C. JOHNSON, OF RHINELANDER, WISCONSIN, ASSIGNOR TO JOHNSON BROTHERS & CO., OF SAME PLACE.

SLED-BRAKE.

SPECIFICATION forming part of Letters Patent No. 392,341, dated November 6, 1888.

Application filed July 23, 1888. Serial No. 250,734. (No model.)

To all whom it may concern:

Be it known that I, HANS C. JOHNSON, of Rhinelander, in the county of Oneida and State of Wisconsin, have invented a new and Improved Self-Adjusting Sled-Brake, of which the following is a full, clear, and exact description.

This invention relates to sled-brakes, and has for its object to provide a sled-brake which will be effective and durable.

The invention consists in a sled-brake constructed and arranged as hereinafter described and claimed.

Reference is to be had to the accompanying drawings, forming a part of this specification, in which similar figures of reference indicate corresponding parts in all the views.

Figure 1 is a side view of a sled-frame and pole with invention applied. Fig. 2 is a plan view thereof, and Fig. 3 is a side view showing brake raised out of position for use.

In carrying out this invention a pair of dogs, 1, are pivoted between their ends to brackets 2 on the inside of the runners 3, the upper portion of the dogs 1 projecting above the runners 3, and their lower curved portions normally extending down in a rearward direction toward the bottom of the runners, so that with a slight backward movement of the upper portion of the dogs the points of the lower portion will be projected beneath the runners. The dogs 1 are operated by means of diagonal rods 4, having their forked ends 5 pivoted to the upper ends of the dogs 1, and their forward ends engaging a forked piece, 6, connected by a detachable pivot-pin, 7, to the upper end of a lever, 8, pivoted to a bracket, 9, on the sled-pole 10.

The lower end of the lever 8 is pivoted to the forked end 11 of a horizontal rod, 12, the other forked end, 13, of the latter being pivoted to the lower end of a lever, 14, pivoted in a slot, 15, in pole 10 and having a curved

upper end, 16. The latter is located in line with the neck-yoke, so that when the parts are in the position shown in Fig. 1 any rearward pull on the neck-yoke which bears against the curved end 16 of lever 14 will cause the curved end 16 to be forced back, thereby drawing rod 12 forward, and through the movement thereby communicated to lever 8 and rods 4 moving the upper ends of dogs 1 backward and forcing the lower ends into the snow. In this way the sled will be easily and firmly braked either on a level surface or going downhill. When the brake is not required for use—as, for example, in yards where there is much backing—the dogs may be moved out of the way by withdrawing pin 7 from forked piece 6 and lever 8 and inserting it in a hole, 17, in bracket 9. The forked piece 6 may then be drawn forward and hooked over lever 8, thereby holding dogs 1 up out of the way, as shown in Fig. 3.

By means of a sled-brake constructed and operated as herein set forth a very serviceable and effective sled-brake is provided.

Having thus described my invention, what I claim as new, and desire to secure by Letters Patent, is—

The combination, with a sled and its pole, of the dogs 1, pivoted to the runners, the diagonal rods 4, having their forked ends 5 pivoted to the upper ends of the dogs and provided with the forked piece 6, the lever 8, pivoted to the rear end of the pole, and to which the forked piece 6 is pivoted, the lever 14, pivoted to the forward end of the pole and provided with the curved upper end, 16, and the rod 12, pivoted to the lower ends of the levers 8 and 14, substantially as herein shown and described.

HANS C. JOHNSON.

Witnesses:

E. O. BROWN,
GEO. W. MASON.